

Annual Report 2025



Contents

Welcome message	3
Mission and values	4
Family	6
Voice	14
Growth	19
Strength	24
Government and strategy	32
The team	34
The trustees	35
Summary	36



Message from the Chair and Secretary-General

This year more than ever, we've been reminded of the strength and spirit of the INTO network. Our family continues to grow - not just in numbers, but in the depth of connection between members who are so committed to sharing learning, opening their doors and supporting one another across borders. It's this spirit of collaboration that truly defines INTO.



We've seen it in the enthusiasm behind our TAP INTO exchanges, where members offered their time and expertise with such openness; in the creativity and courage of our Heritage Leaders cohort; and in the willingness of so many partners to help us deepen our collaborations and peer support work. The launch of our Youth Committee has added fresh energy and inspiration, reminding us that the future of heritage is in good hands.

Thanks to this collective momentum, we've been able to provide more hands-on support than ever before - from expanded

HRH Princess Dana Firas of Jordan
INTO Chair

mentoring and advice through ASK INTO and the Incubator, to seed grants for RISE (Re-interpreting International Sites of Enslavement) member-led interpretation. It has been a joy to see how even modest funding or short exchanges can unlock new ideas, new partnerships and real impact on the ground.

Our flagship projects, *Withstanding Change* and *Plants, Enslavement and Public History*, have further strengthened this momentum: not only delivering meaningful impact, but raising the profile of our work globally and showcasing the expertise, generosity and

Catherine Leonard
INTO Secretary-General

shared purpose at the heart of the INTO family.

This has also been the first year of Princess Dana's tenure as Chair, and her leadership has brought fresh insight, warmth and ambition to our shared mission.

*We are so grateful to every member, volunteer and partner who contributes to this shared endeavour. **Your generosity is what makes INTO not just a network, but a movement.** We're excited for what we will continue to build together in the year ahead.*

Family

Voice

Growth

Strength

Our mission and values

*INTO's mission is to strengthen and connect heritage organisations around the world so that cultural and natural places can be **protected, shared and enjoyed by everyone.***

Rooted in the National Trust model - where places are cared for on behalf of the public, supported by communities and sustained for the long term - we help adapt this approach to different cultures and contexts, ensuring it remains a powerful force for global heritage protection.

Through collaboration, shared learning and practical support, from climate resilience guidance to leadership development and TAP INTO exchanges, we foster a community of organisations committed to caring for heritage together. These values of stewardship, partnership and mutual support underpin all our work and reflect what makes INTO not just a network, but a shared movement for change.



Family

Voice

Growth

Strength

Thank you to our supporters

Our enormous thanks go to all the organisations and individuals whose generosity has made our work richer and more impactful.

caraleya™

THE
1772
FOUNDATION



Trevor and Sandie
Johnson

HHT THE HELEN HAMLYN TRUST

JERRAM FOUNDATION



Family



*Celebrating community,
connection and shared purpose
across the INTO network*

2025 at a glance - INTO highlights and organisational development

2025 was a year of real momentum for INTO. Our team evolved - we welcomed Dr Zakiya McKenzie and Charlotte Thomas and Alex returned to the Secretariat. We said goodbye to Vanessa, Dave and Katherine as they moved on to new roles. Moments like our team-building trip to Jersey and the INTO Symposium in London added a welcome sense of connection and optimism.

Across the network, members continued to share ideas generously

*This year reminded me **how powerful** our community can be when we learn from each other. Every shared idea, every partnership, every conversation helped move our work forward.*

- Catherine Leonard, INTO Secretary-General

and support one another, with major projects gathering pace, from *Withstanding Change* to the *Plants, Enslavement and Public History* partnership with the University of Bristol. Our Incubator programme also grew in impact, delivered this year in collaboration with Europa Nostra and helping spark new approaches and partnerships across the network. It was a year shaped by collaboration, curiosity and the feeling that together we are growing stronger.



INTO in Numbers

200+

Participants from member organisations in our programmes

93%

Satisfaction in our member survey

160

ASK INTO queries answered

36

News articles
(63% increase on 2024)

£42K

Small grants allocated to INTO members

2

New films commissioned and launched

49%

Growth in social media followers

1000

Views of our 'We are INTO' film

£603K

Grant for 'Withstanding Change' project phase 2

3

Award nominations

126.5K

Views on social media

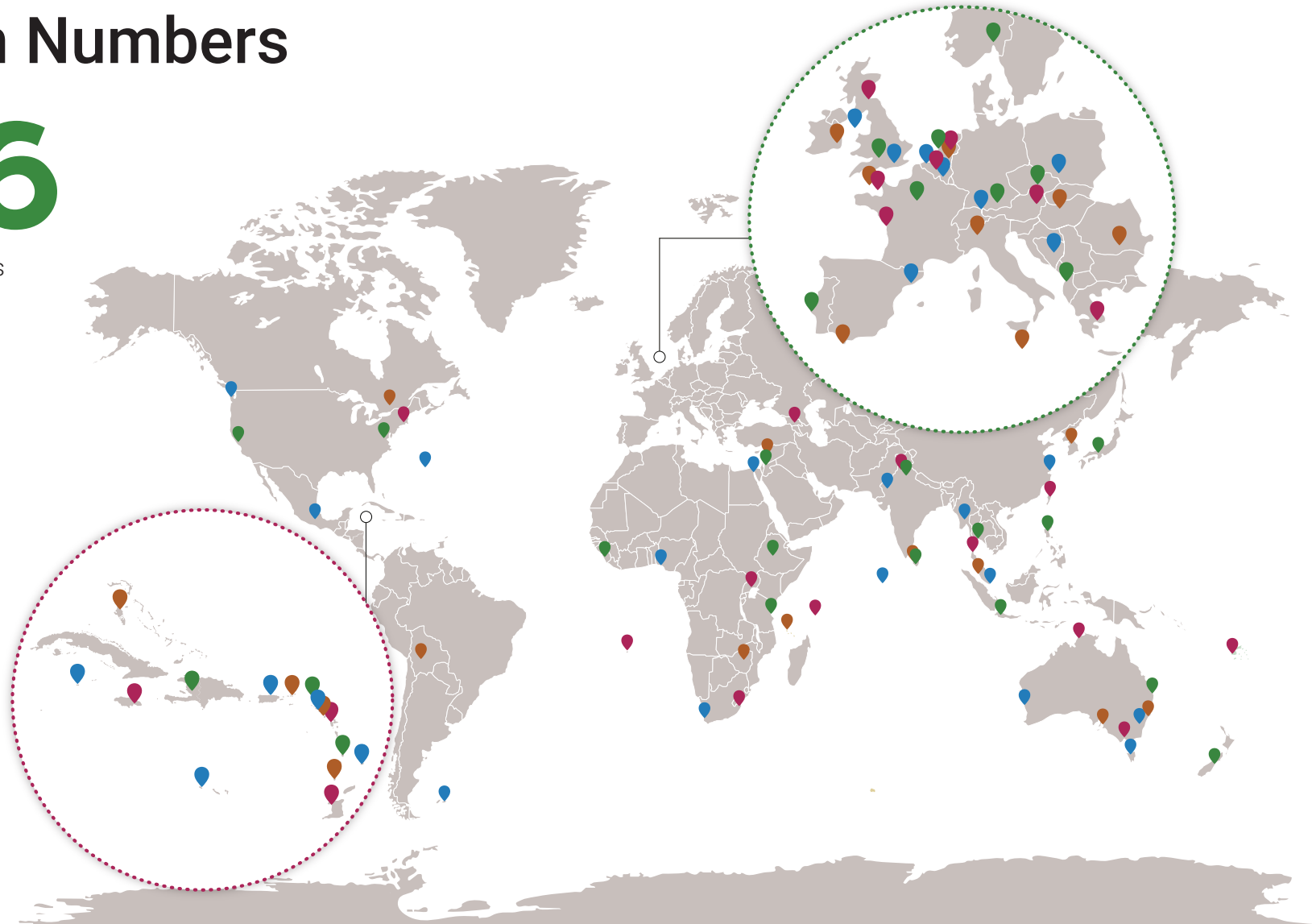
3

Years of support from a Helen Hamlyn Trust grant

INTO in Numbers

106

INTO members



Member achievements and support

Celebrating and supporting our network

This year we celebrated major milestones across the INTO family, recognising the longstanding dedication of members who have shaped heritage protection in their regions for decades.

In Italy, FAI - Fondo Ambiente Italiano - marked their 75th anniversary, reflecting the organisation's influential role in public engagement and national stewardship. In Malta, Din l'Art Ħelwa celebrated 60 years of passionate advocacy and hands-on conservation, continuing to champion the island's cultural identity. And in Romania, Pro Patrimoni marked 25 years of enduring commitment to safeguarding vulnerable buildings and landscapes, inspiring new generations to value craftsmanship and local heritage. Together, these anniversaries highlight the strength, continuity and shared purpose that define our global network.

We continue to provide hands-on support to both emerging trusts - such as Aruba, the Czech Republic, Georgia and Hungary - and long-established partners, including the Trustees of Reservations and Natuurmonumenten, alongside closer engagement with members in Malta and Jersey. This collaborative approach reflects our commitment to strengthening and championing the work of our member organisations worldwide.



Youth engagement

2025 marked a significant step forward in our efforts to empower young people within the heritage sector. The launch of the INTO Youth Committee created an exciting new platform for young voices to shape international conversations and influence the future of our work.

*With Youth Trustees contributing at governance level and initiatives for International Youth Day generating creativity and visibility, we saw a growing confidence and leadership emerging across the network. Together, these developments signal a generational shift - one that brings **fresh energy, new perspectives and long-term sustainability** to the heritage movement.*

Programmes and network initiatives

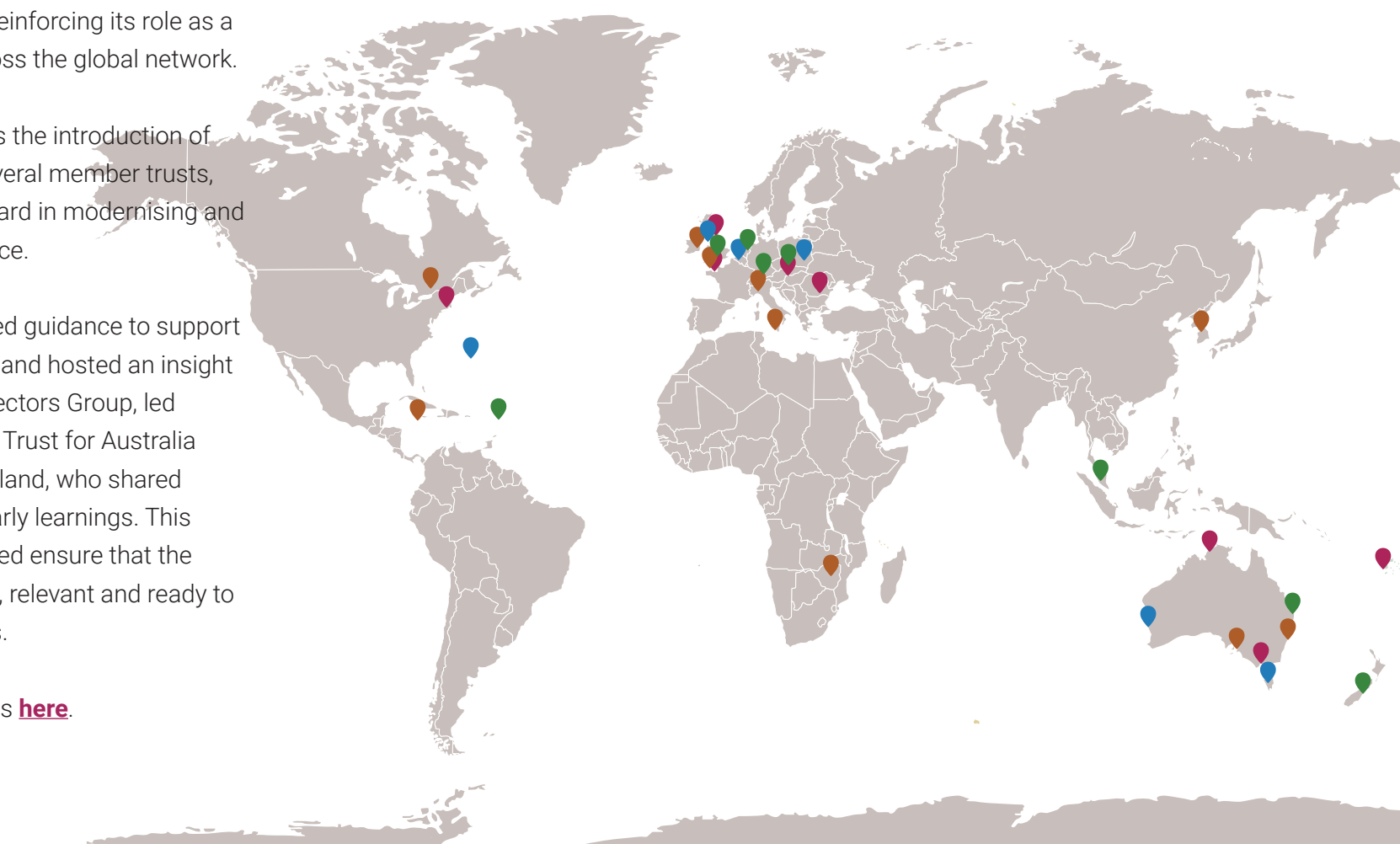
INTO Places

The INTO Places programme continued to deliver strong engagement in 2025, driving significant visitor traffic to the INTO website and reinforcing its role as a valued membership benefit across the global network.

A key development this year was the introduction of digital membership cards by several member trusts, marking an important step forward in modernising and streamlining the visitor experience.

In response, INTO issued updated guidance to support trusts adopting digital solutions and hosted an insight session for the Membership Directors Group, led by colleagues from the National Trust for Australia (Victoria) and Heritage New Zealand, who shared their practical experience and early learnings. This collaborative approach has helped ensure that the programme remains responsive, relevant and ready to evolve alongside member needs.

Find out more about INTO Places [here](#).



Programmes and network initiatives



Communities of Practice (CoP)

The Tropical Gardens CoP found its rhythm, with well-attended online sessions through the year. Initially sparked by a member enquiry from Sri Lanka, this group will deepen engagement in 2026 with a TAP INTO award to convene in person.

Our other active CoPs on membership and RISE (Reimagining International Sites of Enslavement) continued to provide valuable spaces for INTO members to connect, learn and share.

Webinars

INTO partnered with the National Trust (England, Wales and Northern Ireland) on a series of webinars in 2025 and 2026 exploring how landscape-scale nature recovery - and our wider response to climate change - is reshaping the way we understand, manage and interpret historic places, both now and for the future.

Each session examines the role of people and heritage in supporting nature recovery across different ecological contexts, drawing on approaches from the National Trust estate as well as insights, experiences and practical examples from across INTO's global network.



Capitalising on our networks

We continued to connect with partners and other umbrella bodies at the IUCN World Congress and in conversations and

collaborations with the World Monument Fund, SMILO, INTBAU, The Heritage Alliance and Europa Nostra.

Partnerships and global collaboration

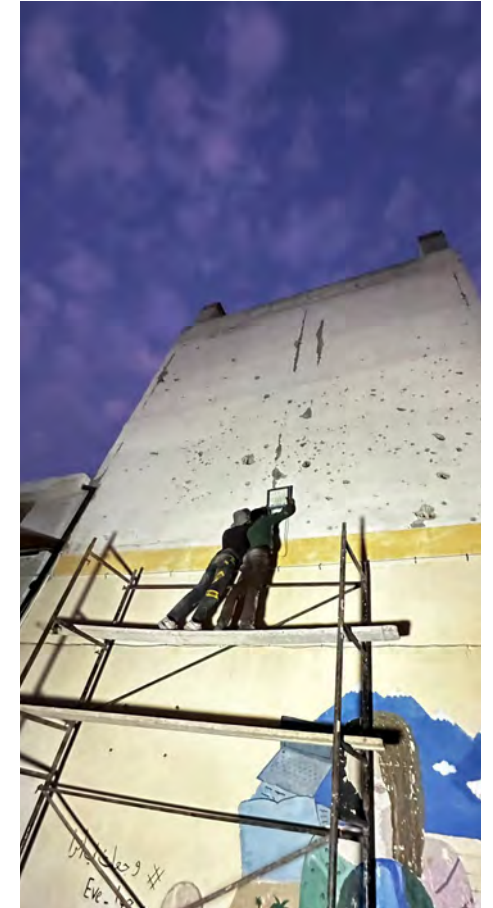
Luke Jerram collaboration

INTO has continued to strengthen its relationship with artist Luke Jerram following his inspiring 2024 webinar with the network.

Building on this connection, INTO collaborated with Luke and the Jerram Foundation to identify an INTO member organisation that could meaningfully benefit from his support. This resulted in a donation from the Jerram Foundation to Turathuna, to install solar lighting in the courtyard of their theatre, an adjoining school and along the street outside.



Completed in November 2025, this simple yet transformative intervention brought light to an area previously plunged into complete darkness after nightfall, significantly improving safety, access and community use of the space.



Voice

*Amplifying heritage stories,
member perspectives and
leadership*



Advocacy and events

Advocacy remained at the heart of INTO's work in 2025, as we continued to use our global platform to champion the issues that matter most to our members and to amplify their voices, stories and successes.

Throughout the year, we brought heritage into international conversations, strengthened regional networks and created spaces for members to learn from and inspire one another.

Our presence at COP30 ensured that heritage was firmly on the climate agenda, highlighting the vital role that cultural and natural places play in resilience, community identity and adaptation. We shared learning from *Withstanding Change*, amplified member perspectives and worked to make sure heritage organisations - often at the forefront of climate impacts - are recognised as essential climate actors.

In June 2025 the *RISE* network participated in the Society for Caribbean Studies conference at the University of Bristol. The conference explored how sites with ties to enslavement can navigate interpretation, community

engagement and care for difficult histories, and the group's involvement underlined the strength of peer learning and community-led dialogue across borders.

On 9 July at Kenwood House, the Centre des Monuments Nationaux (CMN), the National Trust, the National Trust for Scotland and English Heritage signed a new Memorandum of Understanding - an ambitious commitment to deepen dialogue, exchange expertise and explore how the National Trust model could inspire a future "*National Trust à la française*."

This milestone was the result of years of relationship building led by INTO. From CMN's initial exploratory



Advocacy and events



visit in 2022 to two pivotal study visits in 2024 and 2025, INTO facilitated the connections, learning and leadership engagement that laid the groundwork for the MOU. By convening partners, nurturing practical conversations and linking ideas across borders, INTO helped transform shared interests into a shared commitment to long-term collaboration.



In London, the 2025 INTO Symposium brought members, partners and supporters together to reflect on shared challenges and opportunities, with discussions spanning leadership, community engagement, climate resilience and new ways of interpreting heritage. The event reinforced INTO's role as a convenor and catalyst -



turning dialogue into action and strengthening ties across the network. We also continued to reflect on insights from Facing Change Jordan 2024, ensuring that the lessons from that gathering - particularly around collaboration, climate resilience and community rebuilding - continued to shape and inform our work throughout 2025. A core part of our advocacy is celebrating and amplifying member stories. On World Ranger Day, we partnered with the National Trust of Fiji to share their powerful message of frontline stewardship - achieving some of the highest engagement ever seen on INTO's social media channels. And for World Heritage Day, we spotlighted the richness of the 31 members in our INTO Places reciprocal visiting programme,

helping audiences discover global heritage sites and encouraging deeper connections across the network.

Together, these moments reflect a year of strong, values-led advocacy - one in which INTO not only represented its members on the global stage, but also ensured their own voices, priorities and stories were heard loudly and clearly.

Awards

We were delighted in 2025 to be shortlisted for 3 awards. The Association of Association Executives shortlisted INTO as a finalist for their 'Voice of the Year' award. The *Withstanding Change* film was shortlisted for the SDGs Film Awards in Nigeria and for the Smiley Charity Film Awards in the UK.



Being included in nominations and shortlists is a brilliant opportunity for us to reach new audiences and platform our work and the work of our members.



What we learned from our 2025 member survey

Our 2025 member survey painted a very uplifting picture of the INTO network, highlighting a community that feels supported, inspired and deeply connected. Key takeaways include:

Exceptionally high satisfaction



With a brilliant 93% rating, members told us INTO feels welcoming, professional and even 'like a family' especially when internal capacity is stretched.

Real impact from our programmes



TAP INTO grants, the Heritage Leaders programme and our webinars topped the list of most-valued benefits, showing how even small interventions can support our members' growth.

Strong loyalty and confidence



Most members say they are very likely to renew, driven by affordability, reciprocal visiting and access to high-quality resources and training.

Clear challenges we can help address



Time, staffing and funding pressures remain major hurdles, alongside climate-related concerns and leadership turnover.

A growing appetite for more



Members want even greater access to training, collaboration, twinning opportunities, regional groups and more inclusive global representation.

*Overall, the survey confirmed what we already know: INTO's strength lies in its **generous, committed and collaborative community** - and we're excited to build on this energy in the year ahead.*

Growth



*Developing skills, leadership, confidence
and capacity across the network*

Leadership and capacity building

This year saw impressive progress in expanding leadership and capacity across the INTO network.

Our Heritage Leaders programme supported a second cohort of emerging professionals, whose achievements and alumni stories highlight the lasting impact of peer learning and confidence-building. The Incubator programme - delivered in collaboration with Europa Nostra in 2025 - continued to help members test new ideas, pilot solutions and strengthen organisational resilience.

Alongside this, ASK INTO facilitated tailored support, connecting members directly with expertise from across the network. These initiatives, combined with a growing culture of generosity and knowledge-sharing, enabled members to build new skills, forge innovative partnerships and take bold steps forward.

*The momentum behind this collaborative learning approach is helping shape a **stronger, more connected and more capable** global heritage community.*



New members

In 2025, we welcomed Penang Heritage Trust as a new member and advanced a strong cohort of high-potential prospects, including Fondation du Patrimoine and ARChE in France, alongside Loisaba Conservancy in Kenya.

The addition of these members broadens the geographic, cultural and operational perspectives within INTO, strengthening peer-to-peer knowledge exchange and reinforcing the network's core purpose. This strengthened pipeline provides great confidence in an uplift in membership growth in 2026.

[Explore the membership here.](#)

Inclusive European Incubator

The 2025 Incubator programme brought fresh energy to INTO's leadership and learning work, delivered this year in collaboration with Europa Nostra and hosted by the National Trust at Hardwick Hall. The programme created a focused, supportive space for participants from across the network to reflect on their organisational challenges, explore new ideas and reimagine approaches to community engagement, interpretation and long-term sustainability.

Hardwick Hall provided an inspiring backdrop, offering a powerful example of how historic places can be reinterpreted for modern audiences. Participants learned from the site's ongoing work while sharing their own experiences, creating a rich exchange of perspectives and practical solutions. The partnership with Europa Nostra added further depth, connecting INTO members with wider European expertise and strengthening cross-border collaboration.

The 2025 Incubator programme strengthened INTO's role as a global catalyst for collaboration and leadership development, deepening ties with Europa Nostra, showcasing the National Trust model at Hardwick Hall and equipping a new cohort of practitioners with practical skills, confidence and connections to drive change across the network.



The Helen Hamlyn Trust

The support of the Helen Hamlyn Trust (HHT) has been foundational to INTO's growth and impact over the past three years. Their 2022-2025 grant enabled us to expand our global programmes, strengthen organisational capacity and deliver transformative initiatives across leadership development, climate action, knowledge-sharing and digital engagement.

With HHT funding, over the 2022-2025 period we delivered 60 TAP INTO exchanges, launched and expanded the Heritage Leaders programme to over 80 emerging and established leaders, and supported regional Incubators -

programmes that have deepened collaboration and unlocked new opportunities for more than 100 member organisations.

HHT's investment in INTO's Deputy Secretary-General role was particularly significant, catalysing major increases in outreach, project delivery, membership growth and financial sustainability. Over the course of the grant, we raised over £3 million in additional funding, amplified our global heritage voice through COP participation and international media, and strengthened our digital presence with a 1262% rise in website visits.

*As the three-year grant came to a close in 2025, we celebrated the Helen Hamlyn Trust's **unwavering belief in the power of heritage to connect people, build resilience and inspire global action** - support that has not only transformed our organisation but strengthened the wider family of National Trusts we serve.*



Strength

Building resilience, climate action, strategic partnerships and sustained impact



Climate and heritage

Our climate and heritage work gained powerful momentum in 2025, reflecting both the urgency of the global climate crisis and the leadership emerging across the INTO network. The *Withstanding Change* project continued to demonstrate how heritage sites can build resilience through community-led restoration and climate adaptation. This year, partners celebrated a major success with an additional £603,000 Cultural Protection Fund grant, securing Phase 2 of the project and enabling an extended programme of restoration, skills development and community engagement across all six participating sites.

Twinning relationships - such as between Petra in Jordan and Coleshill in Oxfordshire, England - continued to flourish, offering members a practical and supportive space to exchange knowledge, test climate responses and build solutions informed by local experience. INTO's presence at COP30 added further impact, helping ensure that heritage is increasingly recognised within global climate discussions and that community-based approaches remain central to resilience planning.

The *Withstanding Change* exhibition, 'Heritage belongs in every climate conversation'



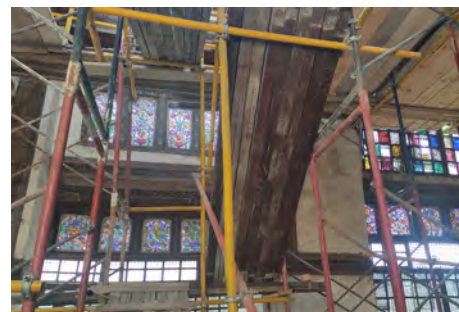
Climate and heritage

opened in London in December 2025, bringing together partners, funders and supporters to celebrate three years of climate-heritage collaboration across six countries. The exhibition showcased powerful stories, objects, films and voices from Ethiopia, Uganda, Jordan, Syria, Egypt and Zanzibar, illustrating how restored heritage sites have become vital community spaces for learning, livelihoods and climate resilience.

Framed around the idea that heritage is not only vulnerable to climate change but part of the solution, the event highlighted traditional knowledge, ecological practices and community leadership as essential tools for

adaptation and recovery. This gathering marked a significant milestone for the programme - affirming a shared, international commitment to placing culture and heritage at the heart of global climate action.

*Together, these achievements signal a powerful forward step: a growing alliance of organisations committed to amplifying and demonstrating that **the intersection of heritage and climate is more vital than ever.***



Key projects and partnerships

Withstanding Change

Withstanding Change continued to shine as INTO's largest-ever project and our flagship showcase for what climate and heritage action can achieve when rooted in local leadership, international collaboration and shared learning. In 2025, the programme delivered impressive results across six heritage sites, with a total of £2.3 million invested in climate resilience, restoration and community-driven adaptation.

A major milestone this year was the award of an additional £603,000 Cultural Protection Fund grant, securing the project's transition into Phase 2. This new investment allowed partners to deepen their restoration and conservation work, strengthen community engagement and embed long-term climate adaptation strategies.

Building on our 2024 conference in Jordan, along with regional meetings throughout the year, the sense of a growing community of practice united around climate resilience and heritage care was reinforced.

International collaboration remained one of the programme's defining strengths. Twinning partnerships provided an inspiring space for shared experimentation, technical exchange and culturally informed problem-solving.



Key projects and partnerships

A year of powerful learning outputs

A central achievement of *Withstanding Change* in 2025 was the creation and launch of a suite of learning resources designed to share knowledge widely across the INTO network and beyond. These outputs are now fully accessible via the **Withstanding Change Resource Hub**, enabling practitioners, partners and the public to explore the project's insights in an open, engaging way.

The resource hub brings together:

- Two short films capturing the human stories and climate challenges behind the project
- Three podcasts featuring conversations with project partners and community leaders
- Case studies documenting practical lessons from each participating heritage site
- New chapters of the *National Trust's Climate Adaptation Guidance*, updated with learning from the project and tailored to a global audience
- Articles, case studies and essays with insights into each site



*Together, these materials provide a rich, accessible knowledge base that reflects the depth of experience generated through the project. They connect practical conservation advice with lived experience and community-driven approaches, ensuring that **Withstanding Change continues to inspire and support** heritage organisations worldwide.*

Key projects and partnerships

Looking ahead

With extended funding, strengthened partnerships and an expanding library of shared knowledge, *Withstanding Change* is now firmly positioned as a global leader in heritage and climate work.

The momentum of the project continued to grow over the year, demonstrating what is possible when communities, heritage professionals and international partners work together to protect the places that matter most.

Key projects and partnerships

Plants, Enslavement and Public History

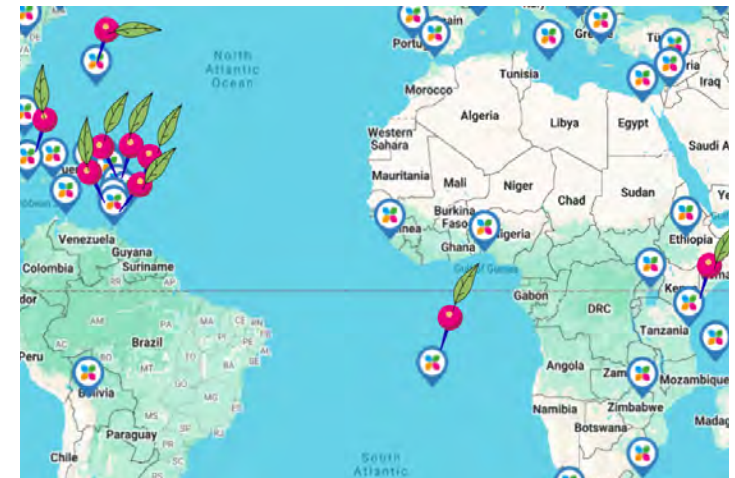
Announced in May 2025, the *Plants, Enslavement and Public History* project represents a significant new stage in INTO's work to support more inclusive and community-centred approaches to heritage interpretation. Delivered in partnership with the University of Bristol and the National Trust, the project explores how plants, gardens and landscapes can reveal stories of enslavement, resistance, healing and cultural memory in ways that resonate with contemporary audiences.

We were delighted to welcome Dr Zakiya McKenzie to the INTO team to lead the project, in collaboration with the RISE (Re-imagining International Sites of Enslavement) network. Her expertise in ecological storytelling, Caribbean heritage and community engagement has already shaped

the project's approach, ensuring that its development is grounded in lived experience, cultural knowledge and a deep understanding of how landscapes carry memory.

A key component of the programme in 2025 was the introduction of seed grants, designed to help INTO members pilot new ideas and test creative interpretive approaches linked to the project's themes. Nine organisations from the RISE network were awarded grants to explore the relationships between plants and the histories of enslavement at their sites.

These included projects ranging from developing new garden-based interpretation in Barbados and Bermuda to revitalising historic African kitchen gardens in Jamaica, transforming stonework and gardens in Nevis, and creating new interpretive landscapes in Montserrat, Saint Lucia, Saint



Key projects and partnerships

Helena and Trinidad and Tobago.

Together, the seed-funded projects are generating rich insights into how plant stories can open up conversations about memory, identity and resilience.

These grants play a vital role in empowering organisations to experiment with new interpretive methods, engage communities more directly and make meaningful connections between heritage, nature and lived experience. The learning from each seed grant will feed back into the wider project, helping shape practical tools and frameworks for sensitive, ethical and inclusive storytelling across the INTO network.

As the project evolves, Plants, Enslavement and Public History is becoming a powerful model for how heritage organisations can approach difficult histories with honesty, creativity and care. By bringing together academic research, community insight and practical support for members, the project is helping to build a richer and more inclusive understanding of the landscapes and stories held within our shared heritage.

This research is supported by a United Kingdom Research & Innovation (UKRI) Future Leaders Fellowship.



Governance and strategy

INTO is a registered charity in England and Wales. It is governed by an international board which met virtually throughout 2025 and in person in London in July.

We are grateful to all our Trustees for their time, guidance and support.

The National Trust of England, Wales and Northern Ireland hosts the INTO Secretariat and employs a Secretary-General who manages the day-to-day operations of the charity. This delegated framework is set out in a by law. In 2025,

INTO continued to benefit from the generous support of the National Trust of England, Wales and Northern Ireland which was extended in September 2025, meaning that two further core roles are now underwritten. We are deeply grateful for this support.

When planning our activities, the Trustees consider the Charity Commission's guidance on public benefit, which is written into INTO's charitable purpose, to 'promote the conservation and enhancement of the natural and cultural heritage of all nations for the benefit of the people of the world'.



*Our definition of heritage is very broad, and it can cover everything from land and biodiversity to buildings and landscapes, collections and intangible things like language and traditional practices. In fact, **what makes something part of our heritage is not whether it is a building or a landscape, but the value we place on it.***

Governance and strategy

In 2025, we continued to focus our work on our four main pillars: **Family**, **Voice**, **Growth** and **Strength**; and our overarching themes:

- Amplify youth voices: We're working with our members and partners to ensure young people are heard.
- Encourage intergenerational exchange: Our programmes and projects bring different generations together, creating more opportunities to connect and engage.
- Boost equality, diversity and inclusion (EDI): INTO is committed to making everything we do inclusive and fair.
- Inspire climate action: We're dedicated to working at the intersection of heritage and climate and encouraging our members and their supporters to take action against climate change.
- Revitalise nature recovery: We're focused on helping nature thrive throughout the world.
- Build community: Working in partnership with communities is a big part of our mission.



The team



Catherine Leonard
Secretary-General



Alex Lamont Bishop
Deputy Secretary-General



Ellie Oliver
Communications
Manager



Charlotte Thomas
Climate Heritage
Programme Manager



Zakiya McKenzie
Programme Manager,
RISE



Dave Simpson
Withstanding Change
Programme Manager



Jacqui Simpson
Withstanding Change
Programme Officer



Vanessa Targett
Deputy Secretary-General



Katherine Shingler
Project Manager
(National Trust)

The trustees



**HRH Princess
Dana Firas of Jordan**
Chair



John Orna-Ornstein



Patricia Kell



**Barbra Babweteera
Mutambi**



Martin Galea



Julian Donaldson



Julian Menko



Fauzy Ismail



Catherine Childs



Kofo Adeleke



Kanitha Kasina-Ubol



Omar Eaton-Martinez

Summary

As we reflect on 2025, we are proud of the momentum and collective energy that have shaped our work this year. Across the network, members continued to share expertise generously, strengthening the connections that make INTO such a powerful community.

This collaborative spirit was evident throughout our programmes and projects, from the expansion of Withstanding Change - supported by a further £603,000 grant - to the growing impact of our Incubator, delivered in partnership with Europa Nostra for the first time.

Our focus on meaningful learning and peer support continued to deliver results. With more than 200

members taking part in INTO programmes and 93% satisfaction recorded in our annual survey, it is clear that our investment in leadership development, knowledge sharing and practical support is resonating across the network. Initiatives such as the new INTO Youth Committee and the growing Communities of Practice have brought fresh perspectives and strengthened our intergenerational approach.

This year also marked important progress in inclusive storytelling and climate action, with the launch of Plants, Enslavement and Public History and continued advancements in nature- and community-led resilience work. These projects not only support our members but help position INTO as a global voice for heritage at a time of urgent environmental and social change.

Looking ahead we remain committed to amplifying member voices, deepening partnerships and sustaining the culture of generosity that defines the INTO movement.

We are grateful to all our members, funders and partners for their support and look forward to building on this year's achievements together.





<https://www.into.org/>
info@into.org

Savoy Hill House, 7-10 Savoy Hill, London WC2R 0BU

© 2026 The International National Trusts Organisation (INTO)

Registered charity in England and Wales 1175994

'The object of the Charity is to promote the conservation and enhancement of the natural and cultural heritage of all nations for the benefit of the people of the world and in particular but without limitation:

- (1) to foster international co-operation and co-ordination between National Trusts for conservation and heritage and similar organisations;
- (2) to increase and enhance the capacity of such conservation and heritage organisations;
- (3) to encourage the establishment, where they do not presently exist, and development of such conservation and heritage organisations;
- (4) to formulate and promote conservation best practices; and
- (5) to pursue advocacy in the interest of conservation of natural and cultural heritage.'

INTO Constitution, Clause 3